

GlobalViewer®

Free Web-Based A/V Resource Management and Remote Control Application



FEATURES

- **Created and uploaded using Global Configurator which is available for free download** — Extron GlobalViewer Web pages are created and uploaded by Global Configurator, which can be downloaded from the Extron Web site free of charge. There are no per seat charges and no licensing fees.
- **Remotely monitor and control A/V devices** — GlobalViewer Web pages are viewable using Internet Explorer version 6.0 or later on any computer with access to the network.
- **Global View displays similar devices on a single screen** — Provides overall device type status summary for all similar devices in all rooms, or groups of rooms, on a single screen.
- **Room View displays all devices in one room on a single page** — Enables users to monitor and control all devices for a single room on one page.
- **Location tree provides up to eight levels of organization** — Allows for a high level of detail in organizing devices by location, e.g., State, City, Building, Floor, Room, etc.
- **Schedule devices to turn on or off at preset days and times** — Users can view and modify dates and times for all configured events and notifications.
- **Multiple pre-designed graphical interface skins** — Extron offers an assortment of colorful graphical user interfaces to choose from during the configuration process.
- **Support for open Internet standards** — GlobalViewer software supports existing open Internet standards such as HTML, XML, and JavaScript.
- **View devices by location or device type** — Connected devices are viewable by device type; such as displays, switches, video projectors, etc; or by location. The "Location" and "Type" tabs in GlobalViewer allow users to switch between the two views quickly.
- **All OFF by device type** — Allows you to turn off all similar devices, such as projectors, at once.
- **User-definable Help button** — Provides a URL link that appears on every page for quick access to an e-mail form, contact info, or online user guide.

DESCRIPTION

GlobalViewer® is a free Web-based A/V resource management and remote control application for institutional A/V environments. Together with IP Link®-enabled products or IP Link interfaces, GlobalViewer provides a powerful, flexible way to manage, monitor, and control both Extron and third-party equipment like projectors, plasmas, monitors, VCRs, DVD players, and other devices using a standard TCP/IP network.

GlobalViewer Is Built By Global Configurator

The Web pages and scripts created by Global Configurator and uploaded to an IP Link Ethernet Control Interface are referred to collectively as GlobalViewer. Once uploaded, GlobalViewer allows the user to manage, monitor, and control connected devices.

Access Via a Web Browser

Web pages stored on the IP Link control interface can be viewed using Internet Explorer® version 6.0 or higher from any computer with access to the network.

Choose a Pre-Designed Skin

GlobalViewer features a collection of graphical user interface "skins" that can be selected during the configuration process. As Extron developers design additional skins from which to choose, they will be posted to the Extron Web site for downloading.

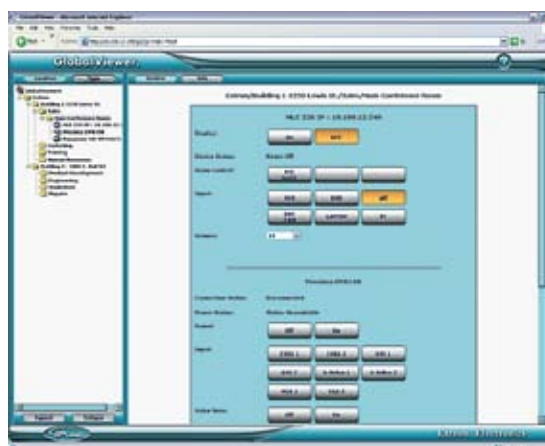
Customizable Look and Feel

The Web page source code for GlobalViewer is included and can be customized using standard HTML editing tools. An experienced Web developer can add images, modify text, and change background colors to create a look and feel that reflects your brand or your user's specific requirements. For example, a university with dozens of devices and rooms to control may wish to customize GlobalViewer's Web pages with the university's school colors and logo.

MINIMUM SYSTEM REQUIREMENTS

- Intel® Pentium® III 1 GHz processor
- Microsoft® Windows® NT SP4, Windows 2000 SP2, or Windows XP SP2
- Microsoft Internet Explorer 6.0 with ActiveX enabled
- Microsoft Windows Script 5.6 download [here](#)
- 512 MB of RAM
- 50 MB of available hard disk space
- A network connection with a data transfer rate of 10 Mbps, 100 Mbps recommended

Control Screen



The control screen allows you to remotely control many functions, including volume, power, input source and more.

MODEL

GlobalViewer

VERSION DESCRIPTION

Web-Based Asset Management Software

PART

N/A